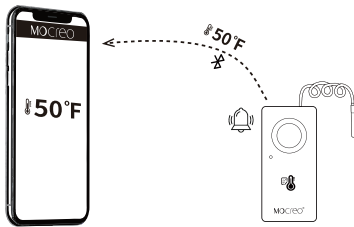


## Introduction

The ST8 Sensor is an efficient and practical temperature data logger that is specifically designed to monitor environmental temperature changes and acquire temperature data. With a user-friendly App interface, the ST8 Sensor allows for seamless customization of temperature logging intervals. Furthermore, temperature data can be effortlessly exported for one-step analysis.

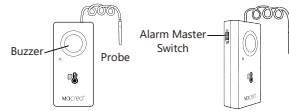
### Features:

- Detectable Temperature Range: -40°F ~ 257°F (-40°C ~ 125°C).
- Data Storage: 32,000 temperature data points.
- Logging Interval: 10 seconds - 16 hours selectable.
- File Export Format: CSV file.
- Length of Probe Cable: 4.92 ft.
- As an example of monitoring freezer temperature, please place the probe inside the freezer and affix the body of the ST8 Sensor outside the refrigerator door.



## Product Parameter

### ST8 Data Logger

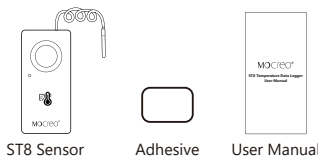


Note: The alarm master switch serves as the master control for the overall alarm system of the Sensor. When it is turned off, even if alarms are set on the App, the Sensor also does not trigger any alarms.

### Specification

Product Model	ST8
Product Dimensions	3.86 x 1.82 x 0.88 inch (LxWxH)
Weight	3.70 Ounces
Battery	9V 6LR61
Temp Measuring Range	-40°F~257°F (-40°C~125°C)
Accuracy	±0.9°F/±0.5°C (14°F ~ 185°F/10°C ~ 85°C) ±1.8°F/±1°C (-22°F ~ 14°F/-30°C ~ -10°C, 185°F ~ 212°F/85°C ~ 100°C)
Data Storage	32,000 temperature data points
Logging Interval	10 seconds - 16 hours (Optional, Default 10 seconds)
Response Time	10 seconds
Communication Range	50ft/15m (No obstacles)
Cable Length	4.92ft
Cable Cross Section	4mm x 1.3mm
Size of Stainless Steel Shell	6mm in diameter
Wireless Connection	Bluetooth 4.2 BLE
Noise Level	110dB

## What's in the Box



## Setup

### 1. Download the MOCREO Sensor App

Download the MOCREO Sensor App (Search [MOCREO Sensor] on Google Play/App Store, or scan the QR Code below).



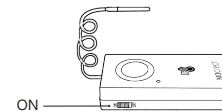
MOCREO Sensor App

### 2. Setup Tutorial



### 3. Connect the Temperature Sensor

(1) Turn the Sensor's alarm master switch to "ON".

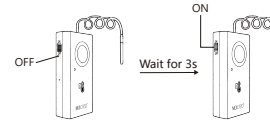


(2) For iOS: Turn on the Bluetooth.

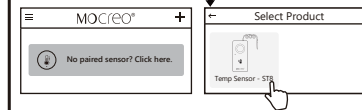
For Android: Turn on the Bluetooth and GPS.



(3) Turn the ST8 Sensor's alarm master switch to "OFF" for at least three seconds. Then turn it back to "ON" again.



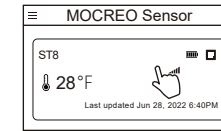
(4) App Home >> [+]Button >> Temp Sensor - ST8 >> Add Devices >> Select the ST8 Device >> Click "Add" button, then the Sensor will be added.



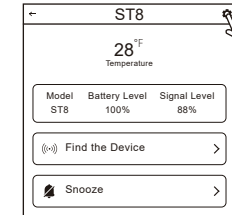
**Important:** When the Sensor's battery level is low, please export the data before replacing the battery to avoid potential data loss (Loss of up to 127 recently measured temperature points).

## Settings

1. Click on the ST8 Sensor Card (Home Page) to access Overview Page.

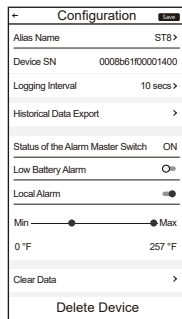


2. Click on the Setting Button on the upper right of the Overview Page to access the Setting Page.



- Find the Device: The selected device will emit three beeps.
- Snooze: Temporarily silence the alarm for this instance without disabling the alarm itself.

### 3. Configuration



• **Logging Interval (Default is 10 secs):** Set the interval for temperature logging. If the data recorded by the Sensor exceeds 32,000 temperature points, new measurements will overwrite from the earliest first temperature point. Please refer to the number of days it takes to record temperature points up to 32,000 entries corresponding to the different logging interval below.

**Note:** The response time of the Sensor is fixed at 10 seconds.

Logging Interval	Reference Days
10 seconds	3.7 Days
1 minute	22.2 Days
30 minutes	666.7 Days
1 hours	1333.3 Days

• **Historical Data Export:** Export all historical data recorded by the ST8 Sensor (Capable of storing up to 32,000 temperature points).

• **Status of Alarm Master Switch:** This function is exclusively for monitoring the current status (ON/OFF) of the Sensor's alarm master switch. To make any specific adjustments, please operate the physical button on the Sensor. If the alarm master switch is in the OFF state, none of the alarms configured through the App will be triggered.

• **Low Battery Alarm:** Low Battery Alarm (Disabled by default): If enabled, the device will trigger an alarm when the battery level falls below 15%.

• **Local Alarm:** Enable this option and the ST8 Sensor will beep when the set threshold is exceeded. Conversely, if disable, the Sensor will not beep if the temperature exceeds the set threshold.

**Note:** This configuration will only take effect when the alarm master switch of the Sensor is turned on.

• **Temperature Threshold Setting:** Set the maximum and minimum range for pre-defined temperature thresholds. When the temperature exceeds these thresholds, the Sensor will trigger an alarm, and the alarm will automatically stop when the temperature returns to normal.

• **Clear Data:** This option allows you to choose whether to archive and clear recorded data or to directly clear all recorded data.

• **Delete Device:** The Sensor will be removed from the App.

### Note:

(1) If the data recorded by the Sensor exceeds 32,000 temperature points, new measurements will overwrite from the earliest first temperature point. Therefore, it is important to export the data for backup purposes in a timely manner.

(2) When the low battery alarm is triggered, the Sensor will emit a beep every 5 seconds until the battery is depleted (it is recommended to replace the battery).

(3) If the temperature detection exceeds the threshold, the Sensor will emit a beep once a second. There are a few ways to turn it off:

- Snooze (On the App)
- Disable the local alarm (On the App)
- Turn off the alarm master switch (Sensor physical button)

## FAQ

### Q1: How to check the battery status?

A: You can check the battery status by Sensor Settings on the App.

### Q2: Will I be alarmed when the battery is low?

A: You may enable the Low Battery Alarm on the App. Then when the battery status is lower than 15%, the Sensor will beep every 5 seconds until the battery runs out.

### Q3: Is the ST8 Sensor waterproof?

A: The probe of the ST8 Sensor is waterproof, but the ST8 Sensor's main body is not waterproof. Please be careful to avoid getting the main body of the ST8 Sensor wet.

### Q4: How to quickly find the Sensor on the App card?

A: Click the ST8 Sensor card and select "Find the Device", the current ST8 Sensor will beep. In order to manage your device better, we recommend you to name your device.

## FCC Statement

FCC ID (Sensor) : 2A36D-ST7

This device complies with part 15 of the FCC Rules. Operation is subject to the following two conditions:

- (1) This device may not cause harmful interference.
- (2) This device must accept any interference received, including interference that may cause undesired operation.

**Warning:** Changes or modifications not expressly approved by the party responsible for compliance could void the user's authority to operate the equipment.

**Note:** This equipment has been tested and found to comply with the limits for a Class B digital device, pursuant to part 15 of the FCC Rules.

These limits are designed to provide reasonable protection against harmful interference in a residential installation. This equipment generates uses and can radiate radio frequency energy and, if not installed and used in accordance with the instructions, may cause harmful interference to radio communications. However, there is no guarantee that interference will not occur in a particular installation. If this equipment does cause harmful interference to radio or television reception, which can be determined by turning the equipment OFF and ON, the user is encouraged to try to correct the interference by one or more of the following measures:

- Reorient or relocate the receiving antenna.
- Increase the separation between the equipment and receiver.
- Connect the equipment into an outlet on a circuit different from that to which the receiver is connected.
- Consult the dealer or an experienced radio/TV technician for help.

## Warranty

MOCREO products can enjoy a 12-Month limited warranty (start from the date that customer receives the product), which applies only to hardware components of the device that are not subject to accident, misuse, neglect, fire, or other external causes, alterations, repair, or commercial use.

# MOCREO®

## ST8 Temperature Data Logger User Manual

## Customer Service

<https://mocreo.com/doc/manual/support/faq.html>

+1 (530) 988-8608

contact@mocreo.com

YouTube MOCREO Sensor



FAQ

Search [MOCREO Sensor] on YouTube to watch the setup video tutorial.

(v1.1)